

NOTICE OF SERVICE INTERRUPTION/WORK FORM

Date of Request (yyyy/mm/dd): _____		Requester: _____	
Start Date – End			
Start Date (yyyy/mm/dd) _____ Time (s) _____		Notes _____	
End Date (yyyy/mm/dd) _____ Time (s) _____		_____	

Building(s) Affected:	1: _____	2: _____
	3: _____	4: _____
Areas/Rooms Affected: _____		

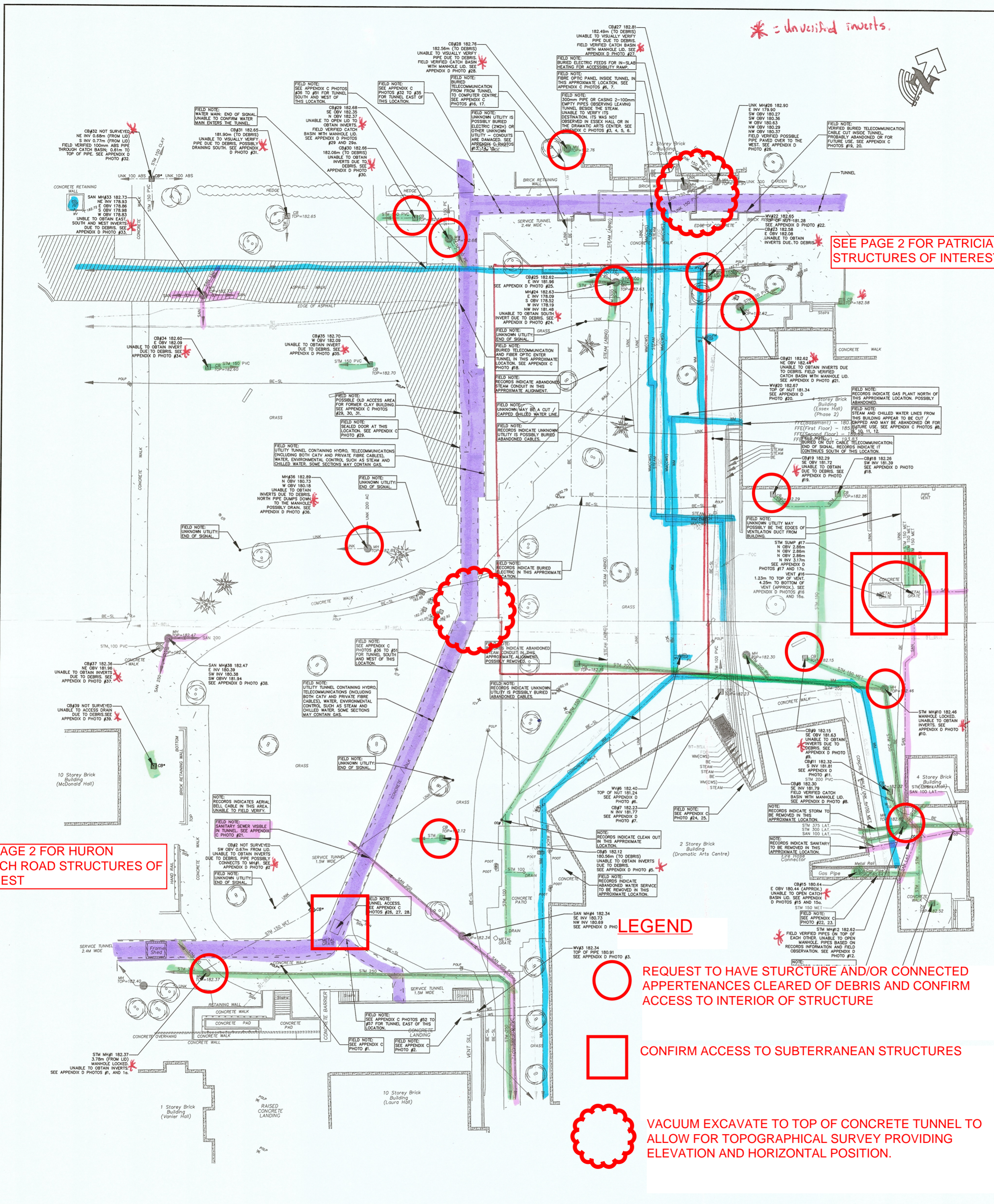
Service to be interrupted:	1: _____	2: _____
	3: _____	4: _____
Description/Reason for Project:		

Contractor: _____	Phone #: _____
Contractor/Project Managers: _____	Phone #: _____

Should you have any questions or concerns, please contact

Notes:

--



* = Inverted Inverts.

SEE PAGE 2 FOR PATRICIA ROAD STRUCTURES OF INTEREST

SEE PAGE 2 FOR HURON CHURCH ROAD STRUCTURES OF INTEREST

LEGEND

REQUEST TO HAVE STRUCTURE AND/OR CONNECTED APPURTENANCES CLEARED OF DEBRIS AND CONFIRM ACCESS TO INTERIOR OF STRUCTURE

CONFIRM ACCESS TO SUBTERRANEAN STRUCTURES

VACUUM EXCAVATE TO TOP OF CONCRETE TUNNEL TO ALLOW FOR TOPOGRAPHICAL SURVEY PROVIDING ELEVATION AND HORIZONTAL POSITION.

KEY PLAN

NOT TO SCALE

GENERAL NOTES

- TZUE'S SUE FIELD INVESTIGATION WAS PERFORMED IN AUGUST 2016. CHANGES TO UTILITIES THAT OCCURRED FOLLOWING OUR INVESTIGATION MAY NOT BE SHOWN. CONSIDERATION SHOULD BE GIVEN TO UPDATING THIS PLAN PRIOR TO FINAL DESIGN AND CONSTRUCTION.
- LIMIT OF INVESTIGATION: AS SHOWN IN THE DRAWING.
- FIELD VERIFICATION OF UTILITIES WAS COMPLETED USING A COMBINATION OF ELECTROMAGNETIC PIPE AND CABLE LOCATE EQUIPMENT.
- NONCONDUCTIVE EMPTY CONDUITS, SERVICES, LATERALS TO BUILDINGS, ABANDONED FACILITIES SUCH AS STREET LIGHT CABLES, WITHIN THE INVESTIGATION AREA MAY NOT BE SHOWN ON THE DRAWING.
- TZUE USED AVAILABLE MEANS IN AN ATTEMPT TO DETERMINE THE LOCATION OF UNDOCUMENTED UTILITIES HOWEVER CANNOT BE RESPONSIBLE FOR FINDING ALL UNDOCUMENTED UTILITIES.
- SURVEY OF TZUE'S UNDERGROUND UTILITY INFORMATION WAS COMPLETED BY IVAN B. WALLACE.
- BASEPLAN WAS PROVIDED BY IVAN B. WALLACE.
- UTILITY OWNERSHIP, MATERIAL, SIZES AND FLOW DRAWING ARE BASED ON RECORDS AND PROFESSIONAL JUDGEMENT.
- UTILITY WIDTHS ON DRAWING ARE BASED ON RECORDS RECEIVED.

ASCE QUALITY LEVELS

THE UTILITY INFORMATION SHOWN ON THIS DRAWING WAS COLLECTED IN ACCORDANCE TO ASCE STANDARD 38-02. THE INFORMATION IS SHOWN BY QUALITY LEVEL WHICH INDICATES THE LEVEL OF EFFORT USED TO DETERMINE THE LOCATION OF THE DATA.

QUALITY LEVEL "D" - INFORMATION DERIVED FROM EXISTING RECORDS OR VERBAL RECOLLECTIONS.

QUALITY LEVEL "C" - INFORMATION OBTAINED BY SURVEYING AND PLOTTING VISIBLE ABOVE GROUND UTILITY FEATURES AND BY USING PROFESSIONAL JUDGEMENT IN CORRELATING THIS INFORMATION TO THE QUALITY LEVEL "D" INFORMATION.

QUALITY LEVEL "B" - INFORMATION OBTAINED THROUGH THE APPLICATION OF APPROPRIATE SURFACE GEOPHYSICAL METHODS TO DETERMINE THE EXISTENCE AND APPROXIMATE HORIZONTAL POSITION OF THE UTILITIES.

QUALITY LEVEL "A" - PRECISE HORIZONTAL AND VERTICAL LOCATION OF UTILITIES OBTAINED BY THE ACTUAL EXPOSURE AND SUBSEQUENT MEASUREMENT OF SUBSURFACE UTILITIES.

LEGEND

- Gas
- Gas Service
- Water
- Water Service
- Water (Chilled Water Supply)
- Sanitary Sewer
- Sanitary Lateral
- Storm Sewer
- Storm Lateral
- Buried Electric
- Buried Electric Street Light
- Buried Electric Traffic Light
- Unknown
- Fibre Optic Cable
- Cable TV
- Buried Telecommunications
- Overhead Wire
- Quality Level "B"
- Quality Level "C"
- Quality Level "D"

TEST HOLE (OL-A)

CONTINUATION ARROW

NOT TO SCALE

GENERAL NOTES

- TZUE'S SUE FIELD INVESTIGATION WAS PERFORMED IN AUGUST 2016. CHANGES TO UTILITIES THAT OCCURRED FOLLOWING OUR INVESTIGATION MAY NOT BE SHOWN. CONSIDERATION SHOULD BE GIVEN TO UPDATING THIS PLAN PRIOR TO FINAL DESIGN AND CONSTRUCTION.
- LIMIT OF INVESTIGATION: AS SHOWN IN THE DRAWING.
- FIELD VERIFICATION OF UTILITIES WAS COMPLETED USING A COMBINATION OF ELECTROMAGNETIC PIPE AND CABLE LOCATE EQUIPMENT.
- NONCONDUCTIVE EMPTY CONDUITS, SERVICES, LATERALS TO BUILDINGS, ABANDONED FACILITIES SUCH AS STREET LIGHT CABLES, WITHIN THE INVESTIGATION AREA MAY NOT BE SHOWN ON THE DRAWING.
- TZUE USED AVAILABLE MEANS IN AN ATTEMPT TO DETERMINE THE LOCATION OF UNDOCUMENTED UTILITIES HOWEVER CANNOT BE RESPONSIBLE FOR FINDING ALL UNDOCUMENTED UTILITIES.
- SURVEY OF TZUE'S UNDERGROUND UTILITY INFORMATION WAS COMPLETED BY IVAN B. WALLACE.
- THE BASEPLAN WAS PROVIDED BY IVAN B. WALLACE.
- UTILITY OWNERSHIP, MATERIAL, SIZES AND FLOW DRAWING ARE BASED ON RECORDS RECEIVED AND PROFESSIONAL JUDGEMENT.
- UTILITY WIDTHS ON DRAWING ARE BASED ON RECORDS RECEIVED.

ASCE QUALITY LEVELS

THE UTILITY INFORMATION SHOWN ON THIS DRAWING WAS COLLECTED IN ACCORDANCE TO ASCE STANDARD 38-02. THE INFORMATION IS SHOWN BY QUALITY LEVEL WHICH INDICATES THE LEVEL OF EFFORT USED TO DETERMINE THE LOCATION OF THE DATA.

QUALITY LEVEL "D" - INFORMATION DERIVED FROM EXISTING RECORDS OR VERBAL RECOLLECTIONS.

QUALITY LEVEL "C" - INFORMATION OBTAINED BY SURVEYING AND PLOTTING VISIBLE ABOVE GROUND UTILITY FEATURES AND BY USING PROFESSIONAL JUDGEMENT IN CORRELATING THIS INFORMATION TO THE QUALITY LEVEL "D" INFORMATION.

QUALITY LEVEL "B" - INFORMATION OBTAINED THROUGH THE APPLICATION OF APPROPRIATE SURFACE GEOPHYSICAL METHODS TO DETERMINE THE EXISTENCE AND APPROXIMATE HORIZONTAL POSITION OF THE UTILITIES.

QUALITY LEVEL "A" - PRECISE HORIZONTAL AND VERTICAL LOCATION OF UTILITIES OBTAINED BY THE ACTUAL EXPOSURE AND SUBSEQUENT MEASUREMENT OF SUBSURFACE UTILITIES.

LEGEND

- Gas
- Water
- Water Service
- Water (Chilled Water Supply)
- Sanitary Sewer
- Sanitary Lateral
- Storm Sewer
- Storm Lateral
- Buried Electric
- Buried Electric Street Light
- Buried Electric Traffic Light
- Unknown
- Fibre Optic Cable
- Cable TV
- Buried Telecommunications
- Overhead Wire
- Quality Level "B"
- Quality Level "C"
- Quality Level "D"

TEST HOLE (OL-A)

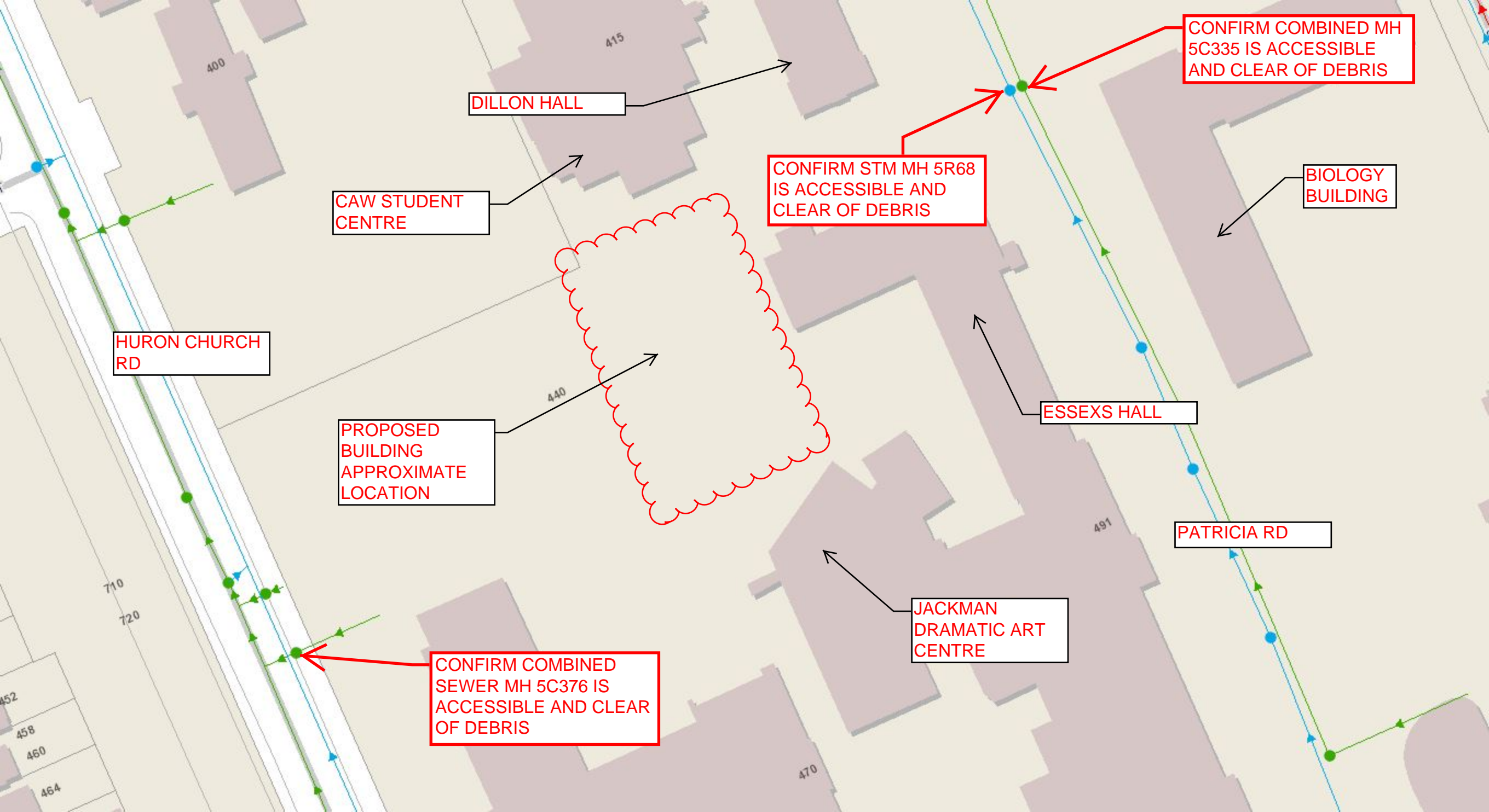
CONTINUATION ARROW

END CAP

NOT SURVEYED, LOCATION BASED ON FIELD OBSERVATION

NOT SURVEYED, LOCATION BASED ON RECORD INFORMATION

END OF SIGNAL



CONFIRM COMBINED MH 5C335 IS ACCESSIBLE AND CLEAR OF DEBRIS

CONFIRM STM MH 5R68 IS ACCESSIBLE AND CLEAR OF DEBRIS

CONFIRM COMBINED SEWER MH 5C376 IS ACCESSIBLE AND CLEAR OF DEBRIS

DILLON HALL

CAW STUDENT CENTRE

HURON CHURCH RD

PROPOSED BUILDING APPROXIMATE LOCATION

ESSEXES HALL

BIOLOGY BUILDING

PATRICIA RD

JACKMAN DRAMATIC ART CENTRE